

SAGITTARIUS

TAPS & SHOWERING

Construction

Brass Body
(CuZn40Pb18); Zinc-alloy
Handles

Finishes

Chrome plated to BS EN
248

Product Type

Contemporary

Water Pressure Tested Between

Min. 0.3 bar, Max. 6.0 bar

Standards

Complies with BS5412,
BS EN200

Cartridge

1/4 Turn 1/2" Ceramic
Disc Valves

Fitting

10mm G1/2" BSP Flexible
inlet connection hoses

Aerator

Spout aerator

Guarantee

10 years against manufac-
turing faults (excluding
serviceable parts)

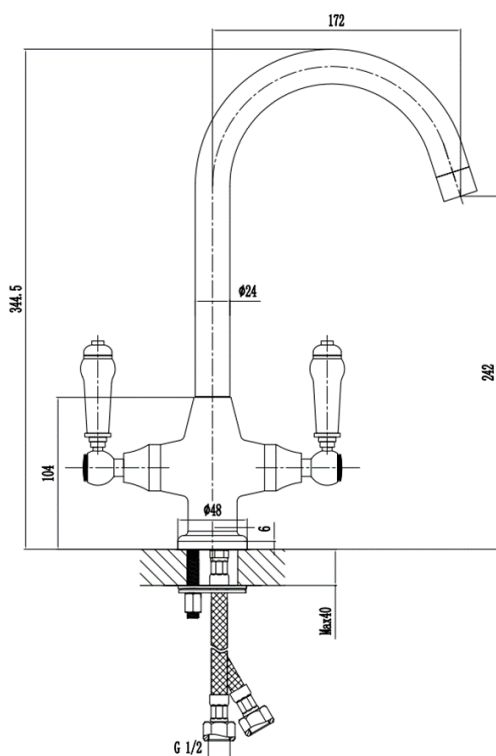
Additional Information

360° Swivel Spout

CANTERBURY LEVER

MONOBLOC SINK

MIXER KTT/294/C



The information contained on this page was correct at the date of issue. Fitting dimensions are provided as a guide only. Some variation may occur due to manufacturing tolerances. We pursue a policy of continuing improvement in design and performance of our products and so reserve the right to change specifications without prior notice

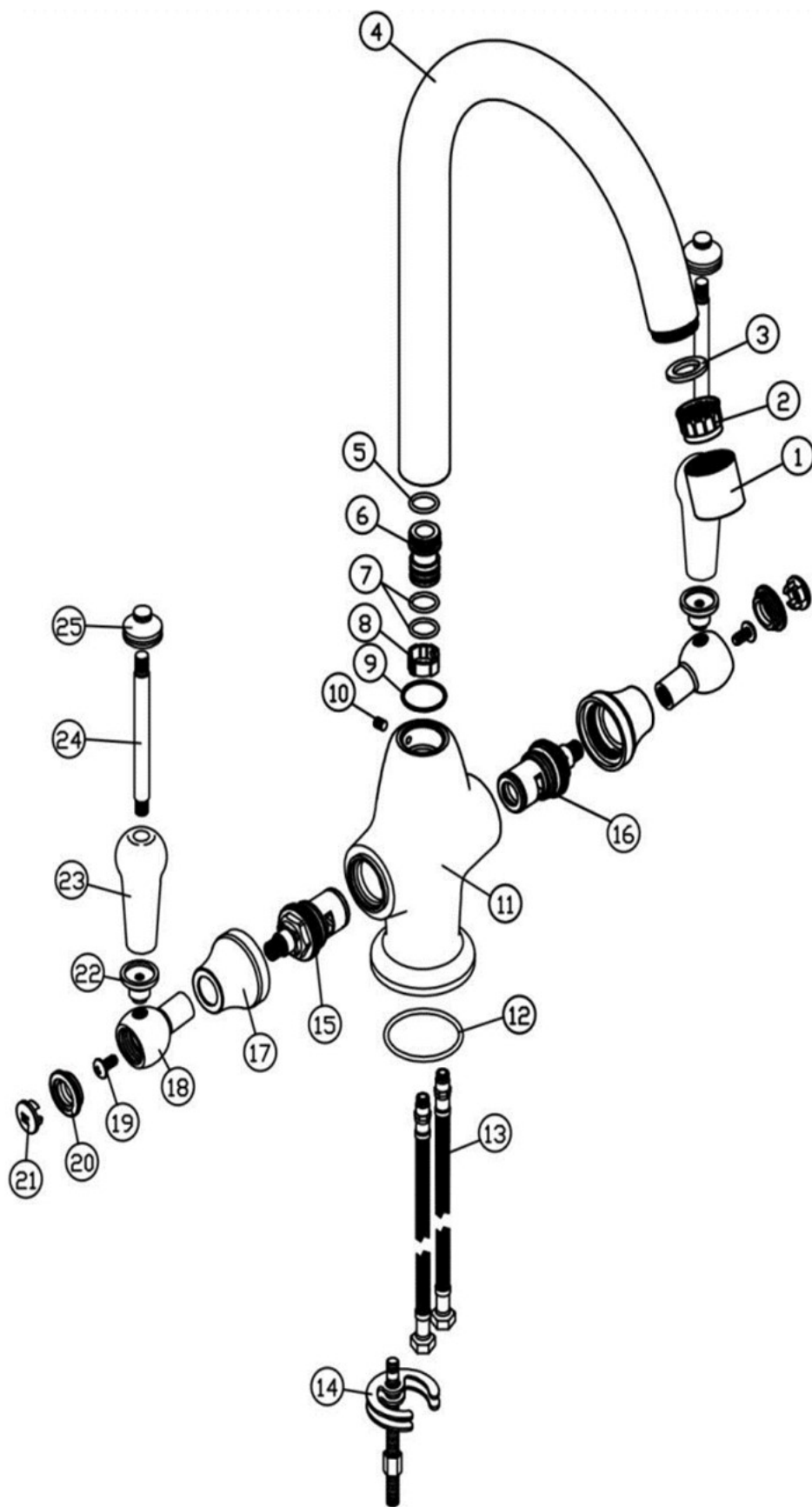
FOR FURTHER ADVICE PLEASE CONTACT :-

SAGITTARIUS LTD UNIT 1 LOWER VICTORIA STREET—CHADDERTON—OLDHAM—OL9 9TU TEL:0616 6202029

EMAIL:TECHNICAL@SAGITTARIUSTAPS.CO.UK

Flow Rates (Litres per minute)

| System Pressure | 0.1 Bar | 0.2 Bar | 0.3 Bar | 0.5 Bar | 1.0 Bar | 1.5 Bar | 2.0 Bar | 3.0 Bar | 4.0 Bar | 5.0 Bar |
|-----------------|---------|---------|---------|---------|---------|---------|---------|---------|---------|---------|
| | - | 4.5 | 5.5 | 7.2 | 10.0 | - | 14.0 | 17.5 | - | 21.3 |



| NO. | DESCRIPTION | QTY |
|-----|-------------------------|-----|
| 1 | NOZZLE | 1 |
| 2 | AERATOR | 1 |
| 3 | WASHER | 1 |
| 4 | SPOUT | 1 |
| 5 | "O" RING | 1 |
| 6 | SPOUT CONNECTOR | 1 |
| 7 | "O" RING | 2 |
| 8 | CONNECTOR | 1 |
| 9 | WASHER | 1 |
| 10 | FLAT SCREW | 1 |
| 11 | TAP BODY | 1 |
| 12 | "O" RING | 1 |
| 13 | M10*1*350 FLEXI TAILS | 2 |
| 14 | M8 FIXING KIT | 1 |
| 15 | 1/4 TURN HOT CARTRIDGE | 1 |
| 16 | 1/4 TURN COLD CARTRIDGE | 1 |
| 17 | CARTRIDGE COLLAR | 2 |
| 18 | HANDLE BODY | 2 |
| 19 | CROSS SCREW | 2 |
| 20 | COLLAR | 2 |
| 21 | INDICES (H & C) | 2 |
| 22 | CONNECTOR | 2 |
| 23 | HANDLE LEVER | 2 |
| 24 | STUD | 2 |
| 25 | HANDLE CAP | 2 |

FOR FURTHER ADVICE PLEASE CONTACT :-
 SAGITTARIUS LTD UNIT 1 LOWER VICTORIA STREET—CHADDERTON—OLDHAM—OL9 9TU TEL:0616 6202029
 EMAIL:TECHNICAL@SAGITTARIUSTAPS.CO.UK