

INSTALLATION INSTRUCTION OF WOOD SLAT PANELS



CONTENT

Tools to Use:.....	2
The Standard Installation Method:	3
Step 1: Preparing the wall or ceiling.....	3
Step 2: Measuring the height and width.....	3
Step 3: Cutting the panels.....	3
Step 4: Mounting the panel.....	4
The Installation Method for Highest Sound Absorption:	7
Step 1: The preparation of wall or ceiling.....	7
Step 2: Installing sound absorbing device.....	7
Step 3: Mounting the panel.....	8
The Simple Installation Method:	9
Option 1:Mounting the panel on the wall with glue.....	9
Option 2:Mounting the panel on the wall with screws.....	9
Notes:.....	10

TOOLS TO USE



Circular Saw



Electric Screwdriver



Wooden racks



Pencil



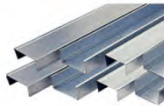
Measuring Tape



Stapler



Screw



Keel



Sound Absorption Wool



Knife



Structural Adhesive



Structural Adhesive Gun

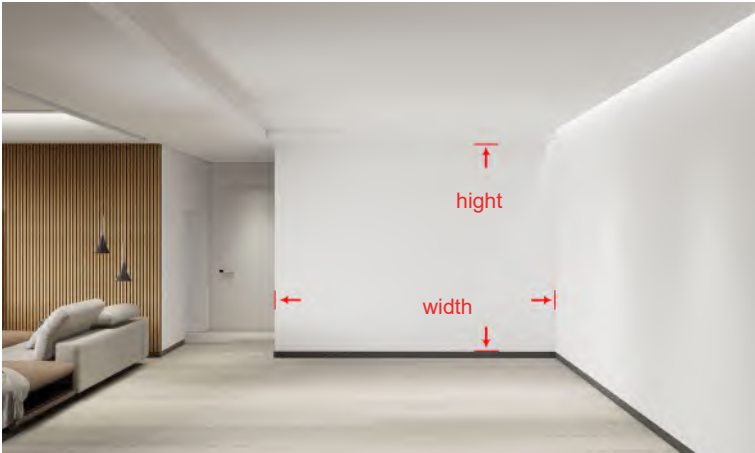
THE STANDARD INSTALLATION METHOD

Step 1: Preparing the wall or ceiling

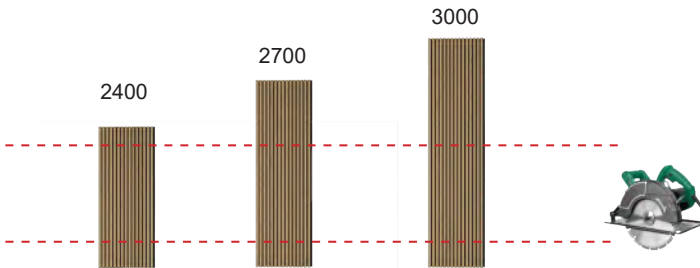


•Make sure the surfaces are clean and dry, without nails and screws

Step 2: Measuring the height and width



Step 3: Cutting the panels



•Cutting the panels with a circular saw and a knife to the length and width you need. There are three different sizes of our panels: 2400 mm, 2700 mm and 3000 mm.

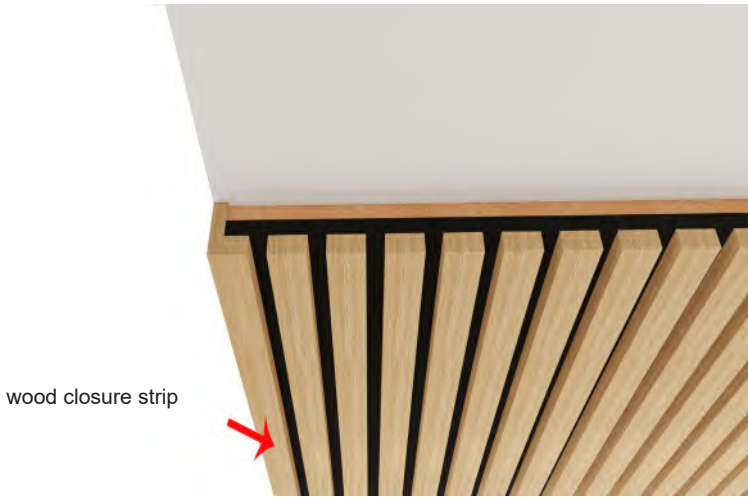
Step 4: Mounting the panel



- Install the underlying wooden racks. Using a pencil to mark out where the screws will go through, then using an electric screwdriver to fix the wooden racks on the wall or ceiling with screws. It is recommended to attach the racks at an interval of 600mm from each other.



- Mounting the slat panel with screws.



wood closure strip

- Mounting a wood closure strip at the end of panel for aesthetics if necessary.

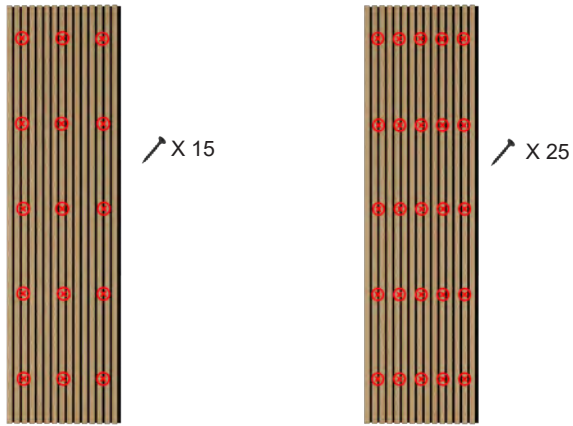


- Mounting panels to the wall or ceiling



- The end result of the installation

TO PLACE PANELS ON A CEILING THE INSTRUCTIONS ARE THE SAME AS ON A WALL



- Screw the panel to the wall or ceiling: For wall, we recommend 15 screws of 3 screws per row each panel. For ceiling, we strongly recommend strengthening the panel by screwing with screws or nailing with a stapler, making at least 5 rows, totally 25 screws, as indicated in the figure.

THE INSTALLATION METHOD FOR HIGHEST SOUND ABSORPTION

Step 1: The preparation of wall or ceiling

- Preparing a clean and dry wall or ceiling



Step 2: Installing sound absorbing device

- We recommend installing the keel initially, then the sound absorption wool, and then the wooden racks and panels. With this combination, you will get the highest sound absorption.



- Inserting the sound absorption wool between the keel and wooden racks.

Step 3: Mounting the panel

•Using the electric screwdriver to screw through the black felt into the wooden racks.



•When assembling in continuation to each other, please note that the felt side of the one panel is seamless with the slat side of the following panel.



•The wall and ceiling are fully installed now.

THE SIMPLE INSTALLATION METHOD

•Our slat panels can also be mounted directly on the wall with screws or glue.

Option 1:

Mounting the panel on the wall with glue



•Firstly, clean the wall surface and make sure it without nails and screws, then measure the wall and panel, and then add structural adhesive to the backing felt of the panel. Finally, mounting the panel on the wall.

Option 2:

Mounting the panel on the wall with screws



•Firstly, make sure the wall surface is clean and dry, then measure the size of the panel you need, and then mark where the screws will go through. Lastly, screws the panel on the wall directly.

NOTE

1.Considering to the material of wall, it would be difficult to screw the panel directly on the wall if the wall is concrete or brick. It need to add an additional layer like racks for solidity.

2.For safety, we do not recommend installing the panels on the ceiling with glue. The uneven glue or poor quality of glue will cause the panel to warp.

3.The above installation methods are for reference only, please refer to the actual operation, our company reserves the right of final explanation.

If you have any questions about the installation, please do not hesitate to contact us and we will be happy to help you.